

GUIDE TO INSTALLATION, PROGRAMMING & OPERATION

COPYRIGHT® 2017 SIP TECHNOLOGIES, LLC. ALL RIGHTS RESERVED. SIP AND THE SIP LOGO ARE TRADEMARKS OF SIP TECHNOLOGIES, LLC, REGISTERED IN THE U.S. AND OTHER COUNTRIES.

CONTENTS

Important Information	2
Safety Precautions	3
NeO ₃ Component Chart	3
Installation Steps	3
- Guide to Installing on Bottled Water Cooler	4
- Guide to Installing on Bottleless Water Cooler	5
How to Program the System	6
Troubleshooting	8
Limited Warranty	8

Please note all drawings, pictures, colors and sizes are approximate for illustrative purposes only and may not exactly resemble the end product.

IMPORTANT INFORMATION

- SIP NEO₃ is manufactured to function on various plugs, sockets, voltage and plug types. Use appropriate power cords.
- Installation must be performed by a trained technician or experienced professional.
- Inspect the carton and SIP NEO₃ for evidence of rough handling and concealed damages. If content appears damaged, ask driver or contact the carrier for damage claim form to fill out. Notify shipper immediately.
- Remove components from the shipping carton. Check that all installation parts and hardware are present.
- Make complete inspection of the SIP NEO₃ system to ensure that:
 - a) There is no physical damage to the system
 - b) All accessories are present
- Intended for indoor use only on water dispensers.
- Use the system on a potable, safe-to-drink, COLD water supply
- Dispenser, water dispenser or compressor are references to bottle and bottleless water coolers

Read Guide to Installation, Operating And Programming, specifications, cautions and warnings before installing and using the system.



ANNUAL MAINTENANCE

- Check and replace the filter disc.
- Check and replace check valve, if appears damaged.
- Check and replace diffuser, if appears damaged.

SAFETY PRECAUTIONS

WARNING – To guard against injury, basic safety should be observed including the following: Read all instructions, specifications, cautions, and warnings before installing and using SIP NEO₃. Learn the specific details regarding installation and use. Failure to follow them could cause serious injuries and possible property damage.

DANGER – To avoid possible electrical shock, unplug dispenser prior to installation of SIP NEO₃.

All Power cords must be three-pin plugs to be grounded. Do not use two-pin plugs.

Power supply cord must be plugged into electrical wall outlet. DO NOT plug into extension cord.

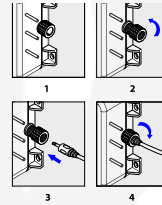
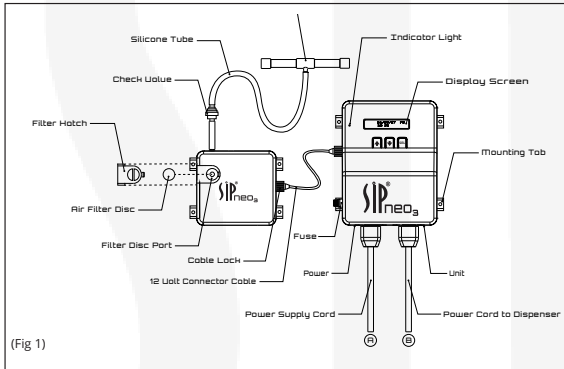
Do not stand on wet floor when installing and servicing the water dispenser.

Install check valve on silicone tubing prior to the diffuser to avoid water from reservoir flowing backward causing damage to ozone generating device.

NEO₃ COMPONENT CHART

WHERE TO PLUG IN POWER CORDS (FIG 1)

Plug the main power supply cord into the "POWER" receptacle (bottom of the control device system, left side). Plug the short power outlet cord (converter cord) into "UNIT" receptacle (bottom of the control device system, right side). Plug the water dispenser power cord into the opposite end of the short power outlet cord (converter cord).



HOW TO SECURE THE CONNECTOR:

1. Locate the Cable Lock Cap on the side of the unit.
2. Turn the Cap counterclockwise to loosen.
3. Firmly insert the 12 Volt Connector Cable into the Connector Cable terminal.
4. Turn the Cap clockwise to tighten, being careful not to overtighten.

Important: All float mechanisms are not identical and the optimal location of the down rod may vary depending on your particular float system.

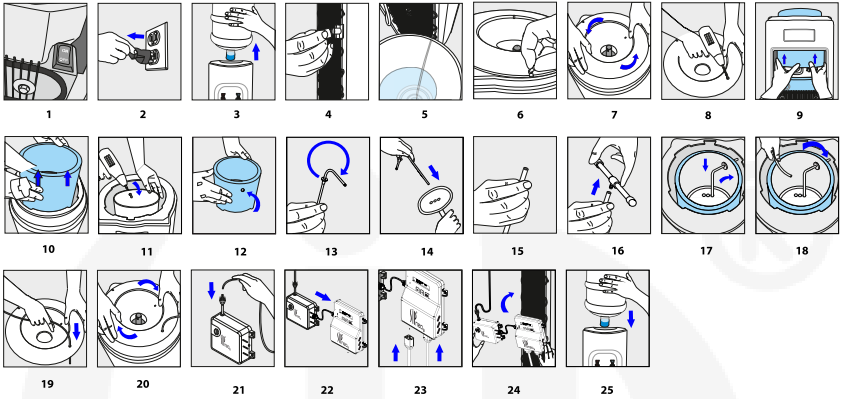
INSTALLATION STEPS

HOW TO INSTALL OZONE GENERATING DEVICE AND CONTROL SYSTEM DEVICE

SIP NEO₃ is designed to use in all brands of bottle and bottleless water coolers (dispensers). The system can be installed on the back of the dispenser or on the wall at the back of dispenser so as to display the indicator light and screen for proper consumer use.

Install to back of the dispenser using zip ties to secure ozone generating device and control system device onto the back of cooler's condenser, or the grids, or on the wall at the back of dispenser. Control Device System should be installed to the right of the Ozone Generating Device.

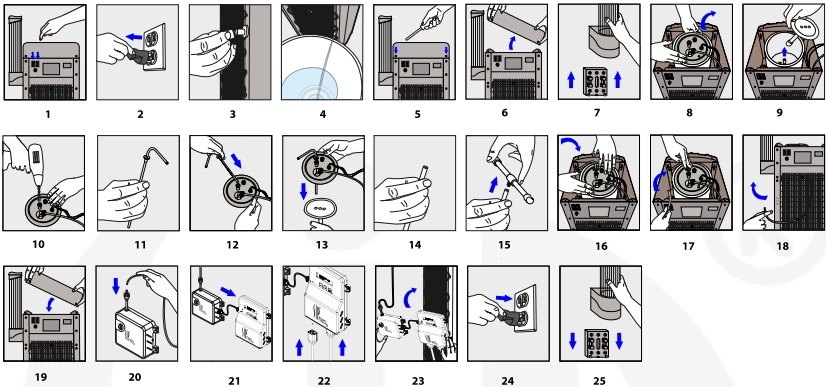
GUIDE TO INSTALLING ON BOTTLED WATER COOLER



STEPS TO INSTALLING ON BOTTLED WATER COOLER

1. Turn unit power off.
2. Make sure unit power is unplugged from wall socket.
3. Remove the units bottled water container.
4. Remove the cap from the units drain line.
5. Drain unit reservoir completely.
6. Locate and remove the units locking screws from the top lid.
7. Remove the units top lid.
8. Drill a 9/32" hole into the top of the units top lid.
9. Lower back grate, and loosen units Insulation Jacket firmly with both hands.
10. Lift up and remove units Insulation Jacket to expose the units reservoir tank.
11. Drill a 9/32" hole into the side of the Reservoir Tank.
12. Drill or cut a 9/32" hole into the side of the Insulation Jacket, then place it back on the Reservoir Tank
13. Switch the direction of the rubber Grommet on the Down Rod so that the neck faces inward.
14. Place the Down Rod into a free port on the Baffle.
15. Measure the distance from hole to bottom of Reservoir and cut Down Rod to size that will accommodate connecting the Diffuser to it using a small piece of silicon tubing.
16. Connect the Down Rod and the Diffuser with the ¼" tubing.
17. Replace the Baffle with attached Down Rod, then secure Down Rod through the Reservoir Tank firmly with the rubber Grommet.
18. Cut your desired length of ¼" tubing for the Neo₃, then connect the first side of the tubing to the inlet of the Down Rod.
19. Take the ¼" tubing connected to the Down Rod and run it through the previously drilled 9/32" hole on the top lid.
20. Replace the units Reservoir Lid and locking screws.
21. Take the ¼" tubing connected to the Down Rod and connect it to the outlet of the Neo₃.
22. Connect both Neo₃ Housings with the 12 Volt Connector Cable.
23. Connect the Neo₃ and Unit power supplies to the appropriate ports below the Neo₃ Master Housing.
24. Use the Neo₃'s Mounting Tabs to mount the Neo₃ on back of the unit.
25. Reinstall the units bottled water container, and power on.

GUIDE TO INSTALLING ON BOTTLELESS WATER COOLER



STEPS TO INSTALLING ON BOTTLELESS WATER COOLER

- | | | | |
|-----|---|-----|---|
| 1. | Turn unit power off. | 15. | Connect the Down Rod and the Diffuser with the ¼" tubing. |
| 2. | Make sure unit power is unplugged from socket. | 16. | Replace the reservoir lid on top of the reservoir, pushing down firmly to lock in place. |
| 3. | Remove the cap from the units drain line. | 17. | Cut your desired length of ¼" tubing for the Neo ₃ , then connect the first side of the tubing to the inlet of the Down Rod. |
| 4. | Drain unit water reservoir completely. | 18. | Take the ¼" tubing connected to the Down Rod and run through the back grate of the unit. |
| 5. | Locate and remove the units locking screws from the top lid. | 19. | Replace the units top lid and locking screws. |
| 6. | Remove the units lid. | 20. | Take the ¼" tubing connected to the Down Rod and connect it to the outlet of the Neo ₃ . |
| 7. | Remove the units Cup Holder from its bracket by pulling up on its base. | 21. | Connect both Neo ₃ Housings with the 12 Volt Connector Cable. |
| 8. | Remove the units cold water Reservoir Lid. | 22. | Connect the Neo ₃ and Unit power supplies to the appropriate ports below the Neo ₃ Master Housing. |
| 9. | Remove the units Baffle. | 23. | Use the Neo ₃ 's Mounting Tabs to mount the Neo ₃ on back of the unit. |
| 10. | Locate the free 9/32" port on top of the Reservoir Lid. If no free port is available, drill a 9/32" hole. | 24. | Plug the unit back in and turn it on. |
| 11. | Locate the Neo ₃ 's Down Rod, making sure the rubber Grommet is in place. | 25. | Replace the units Cup Holder on its base by pushing down firmly. |
| 12. | Place the Down Rod through the 9/32" port/hole on top of the Reservoir Lid, then secure the Down Rod to the Reservoir Lid with the rubber Grommet. | | |
| 13. | Place the Down Rod into a free port on the Baffle. | | |
| 14. | Measure the distance from hole to bottom of Reservoir and cut Down Rod to size that will accommodate connecting the Diffuser to it using a small piece of silicon tubing. | | |

INDICATOR LIGHTS ON CONTROL SYSTEM DEVICE

- The indicator lights are to display the status of the system when the SIP NEO₃ is in function.
- Red light is ozone indicator and is on when O₃ is in operation. When red light is on, sanitization is in progress. Do not dispense or drink water when the red light is on.
- Yellow light is air indicator and is on when the air compressor is in operation.
- Green light indicates O₃ treatment has been successfully performed and dispenser has resumed operation. Green Light is also a power indicator which is on when power is on. It is off when power is not connected.

HOW TO PROGRAM THE SYSTEM

SIP NEO₃ Display Window

The screen is an LCD backlight for clear data display. It displays data during programming and when stationary, when on and off, and when programming operating time for the Ozone generator, air pump, and water dispenser compressor. During normal operation this screen shows date, day of the week and time of day using a 24-hour clock mode.

The Function Buttons

There are three buttons below the LCD display window. They are used for:

- Up and Down (arrows). Press simultaneously to enter programming.
- Up (arrow). Allows cycling through each screen and to change input.
- SEL. Allows change of input, saves, and moves to next input.

Your SIP NEO₃ system has been programmed at the factory. Only the local time, date and day of week need to be adjusted to make your SIP NEO₃ set-up complete. Follow the instructions to adjust these settings.

Function Settings

The following symbols used in the SIP NEO₃ LCD display panel indicates:

O ₃	-	Ozone Generator
AP	-	Air Pump
CO	-	Dispenser Compressor

When O₃ is displayed then you are programming the ozone operation. Likewise, the air pump and compressor/water dispenser symbols indicate that you are programming the operation of these functions.

When O₃ is programmed, the AP is automatically programmed to turn on at the same time. It stays on for 10 minutes after O₃ turns off. This allows the ozone to be dissipated and to leave no residual ozone in the reservoir after the program is completed. The compressor display allows you to control the operation of the water dispenser. Therefore, the cooler can be shut down during periods of inactivity to save energy. In addition, AP can be programmed to turn on independently at two separate times.

How to Enter Programming Mode

Press both UP & DOWN arrows simultaneously and hold to unlock the unit to allow programming. Press UP key to scroll through the five programmable fields:

- Use the SEL key to edit the selected functions.
- O₃ (Ozone Generator)/air pump program and cycle time. When in programming mode Press SEL to enter O₃ programming screen.
- AP (Air Pump) programming and cycle time.
- CO (Compressor) programming and cycle time.

The Compressor Screen Has 5 Programmable Fields:

- Start day of the Week
- End day of the week
- Start daily on time
- End daily off time
- On all the time

These fields are programmed using the same methods – UP key to increment value, DN key to decrement value and SEL key to accept the value. The operation will complete and the new values will be used from the next cycle on. In order to pre-empt the current operation and use the new values immediately press and release DN and SEL keys at the same time.

Generator Programming Instructions

O₃, AP, CO and how to set date, day, and local time

During normal operation, the date and time are displayed.

06/23/17 FR
11:30

To enter the Device Programming mode press the UP and DOWN keys together for about 3 seconds. The following screen is displayed.

Edit/View mode
Press UP key

Once in Device Programming Mode press UP to cycle through each screen. There are 5 programming screens. Any one of the screens can be selected by pressing SEL.

Program Select (UP key)

Edit Mode



Once in Edit Mode, a blinking cursor will appear on the first input of that screen (use previously defined procedure)

TROUBLESHOOTING

- **There is no power to dispenser.**
 - Check to make sure power supply cord is plugged into the electrical wall outlet.
 - Check that power supply cord is plugged into the three-pin "power" socket on the bottom side of control system device.
 - Check to make sure the male end of the converter cord is plugged into the female socket in the "UNIT" on the bottom side of the control system device.
 - Check to make sure the dispenser power cord is plugged into the female end of the converter cord.
 - If no indicator light and/or display is on, check and replace the 10-amp fuse. It is located on the left side of the control system device.
- **There is no production or low production of O₃.**
 - Check all cable connections to make sure all cords are plugged in properly.
 - Check the programming to make sure ozone setting is set correctly.
 - Check and replace the filter disc.
 - Verify a check valve is on the silicon tubing after ozone generator device.
 - Check and/or replace diffuser.

Caution: Make sure to unplug the main power supply cord from electrical wall outlet prior to accessing circuit boards and fuses.

LIMITED WARRANTY

SIP NEO₃ IS WARRANTED AGAINST DEFECTS IN MATERIALS AND WORKMANSHIP, UNDER NORMAL USE AND OPERATION, FOR A PERIOD OF ONE YEAR FROM THE DATE OF ORIGINAL PURCHASE ("WARRANTY PERIOD").

IF A DEFECT ARISES AND A VALID CLAIM IS RECEIVED WITHIN THE WARRANTY PERIOD, AT MANUFACTURER'S DISCRETION ONE OF THE FOLLOWING WILL BE IMPLEMENTED: 1) REPAIRED AT NO CHARGE USING NEW OR REFURBISHED REPLACEMENT PARTS, 2) EXCHANGED WITH A PRODUCT THAT IS NEW OR WHICH HAS BEEN MANUFACTURED FROM NEW OR SERVICEABLE USED PARTS AND IS AT LEAST FUNCTIONALLY EQUIVALENT TO THE ORIGINAL PRODUCT, 3) CREDIT GIVEN FOR THE DEFECTIVE PRODUCT, OR 4) REPLACEMENT PARTS SENT TO PURCHASER TO REPAIR THE PRODUCT.

REPLACEMENT PRODUCTS/PARTS ARE WARRANTED AGAINST DEFECTS IN MATERIALS AND WORKMANSHIP FROM THE DATE OF THE REPLACEMENT OR REPAIR FOR THIRTY (30) DAYS OR FOR THE REMAINING PORTION OF THE ORIGINAL PRODUCT'S WARRANTY, WHICHEVER PROVIDES LONGER COVERAGE. WHEN A PRODUCT OR PART IS EXCHANGED, ANY REPLACEMENT ITEM BECOMES PURCHASER'S PROPERTY AND THE REPLACED ITEM BECOMES PROPERTY OF MANUFACTURER. WHEN A REFUND IS GIVEN, PRODUCT BECOMES MANUFACTURER'S PROPERTY.

EXCLUSIONS AND LIMITATIONS - THIS LIMITED WARRANTY APPLIES ONLY TO PRODUCTS MANUFACTURED BY OR FOR SIP THAT CAN BE IDENTIFIED BY THE "SIP" TRADEMARK, TRADE NAME, OR LOGO AFFIXED TO IT. THIS LIMITED WARRANTY DOES NOT APPLY TO ANY NON-SIP PRODUCT.

THIS WARRANTY DOES NOT APPLY: (A) TO DAMAGE CAUSED BY ACCIDENT, ABUSE, MISUSE OR MISAPPLICATION; (B) TO DAMAGE CAUSED BY INSTALLATION NOT IN ACCORDANCE WITH THE SIP INSTALLATION MANUAL; (C) TO A PRODUCT OR A PART THAT HAS BEEN MODIFIED WITHOUT THE WRITTEN PERMISSION OF SIP; OR (D) IF ANY SIP SERIAL NUMBER HAS BEEN REMOVED OR DEFAUCED.

TO THE MAXIMUM EXTENT PERMITTED BY LAW, THIS WARRANTY AND THE REMEDIES SET FORTH ABOVE ARE EXCLUSIVE AND IN LIEU OF ALL OTHER WARRANTIES, REMEDIES AND CONDITIONS, WHETHER ORAL OR WRITTEN, EXPRESS, IMPLIED OR STATUTORY. SIP SPECIFICALLY DISCLAIMS ANY AND ALL IMPLIED WARRANTIES, INCLUDING, WITHOUT LIMITATION, WARRANTIES OF MERCHANTABILITY, NON-INFRINGEMENT OF A THIRD PARTY'S RIGHTS AND FITNESS FOR A PARTICULAR PURPOSE. IF SIP CANNOT LAWFULLY DISCLAIM OR EXCLUDE IMPLIED WARRANTIES UNDER APPLICABLE LAW, THEN TO THE EXTENT POSSIBLE ANY CLAIMS UNDER SUCH IMPLIED WARRANTIES SHALL EXPIRE ON EXPIRATION OF THE WARRANTY PERIOD. EXCEPT FOR THE WARRANTY PROVIDED HEREIN, THE PRODUCT IS PROVIDED "AS IS." NO SIP RESELLER OR AGENT IS AUTHORIZED TO MAKE ANY MODIFICATION, EXTENSION, OR ADDITION TO THIS WARRANTY WITHOUT THE EXPRESSED WRITTEN CONSENT OF SIP.

TO THE MAXIMUM EXTENT PERMITTED BY LAW, SIP IS NOT RESPONSIBLE FOR DIRECT, INDIRECT, SPECIAL, INCIDENTAL OR CONSEQUENTIAL DAMAGES (INCLUDING BUT NOT LIMITED TO LOSS OF USE OR LOST PROFITS) RESULTING FROM ANY BREACH OF WARRANTY OR CONDITION, OR UNDER ANY OTHER LEGAL THEORY. PURCHASER'S EXCLUSIVE REMEDY AND SIP'S SOLE LIABILITY ON ANY CLAIM, WHETHER IN TORT, CONTRACT, WARRANTY OR OTHERWISE, SHALL BE LIMITED TO THE AMOUNT PAID FOR PURCHASE OF THE PRODUCT FROM WHICH THE CLAIM AROSE AND IN NO EVENT SHALL SIP BE LIABLE FOR INDEMNIFICATION OF PURCHASER ON ACCOUNT OF ANY CLAIM ASSERTED AGAINST PURCHASER OR FOR ANY OTHER FURTHER DAMAGES WHATSOEVER, WHETHER DIRECT OR INDIRECT.

© 2017 SIP TECHNOLOGIES, LLC. ALL RIGHTS RESERVED. SIP AND THE SIP LOGO ARE TRADEMARKS OF SIP TECHNOLOGIES, LLC, REGISTERED IN THE U.S. AND OTHER COUNTRIES.